



Quiet - Convenient - Comfortable

Professionally Managed by:  
**HIGH ASSOCIATES**™

CONTACT

SHARE

HOME • LOCATION • PHOTOS • FEATURES • FLOOR PLANS • LEASING • MOVING • IN THE NEIGHBORHOOD



## WESTBURY MEWS APARTMENTS - FLOOR PLANS

[print page](#)

### 1 Bedroom x 1 Bath Suite



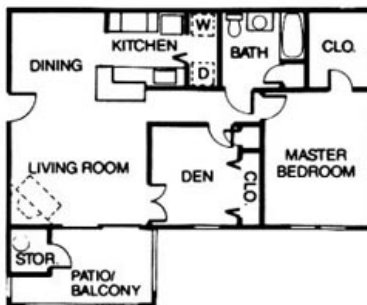
551 sq. ft.  
\$620

### 1 Bedroom x 1 Bath



636 sq. ft.  
\$710

### 1 Bedroom x 1 Bath w/Den



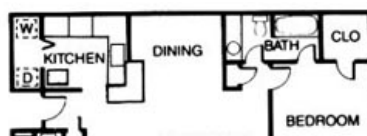
877 sq. ft.  
\$800

### 2 Bedroom x 1 Bath Suite



780 sq. ft.  
\$695

### 2 Bedroom x 2 Bath



### 3 Bedroom x 2 Bath



## Highlights

- 1, 2, 3 bedroom garden apartments
- Free water and sewer
- Swimming pool and heated spa
- Fitness center
- Laundry facility
- Mature landscaping
- Courtyard with gazebo
- Picnic area with grills
- Playground
- Top rated school district
- Free WiFi
- Oversized screened porches
- Exterior storage
- Wood-burning fireplace\*
- Vaulted ceilings\*
- Washer/Dryer connections\*

\*select homes

## Specials

View [current specials](#) >>

## Hours

Monday: 10:00 a.m. – 5:30 p.m.  
 Tuesday - Friday: 8:30 a.m. – 5:30 p.m.  
 Saturday: By Appointment  
 Sunday: Closed

## Tours

Schedule your personal community tour today. Appointments recommended.

call: 843.875.2005  
 email: [westburymews@high.net](mailto:westburymews@high.net)

1425 Old Trolley Road  
 Summerville, SC 29485





1007 sq. ft.  
\$830



1163 sq. ft.  
\$980

